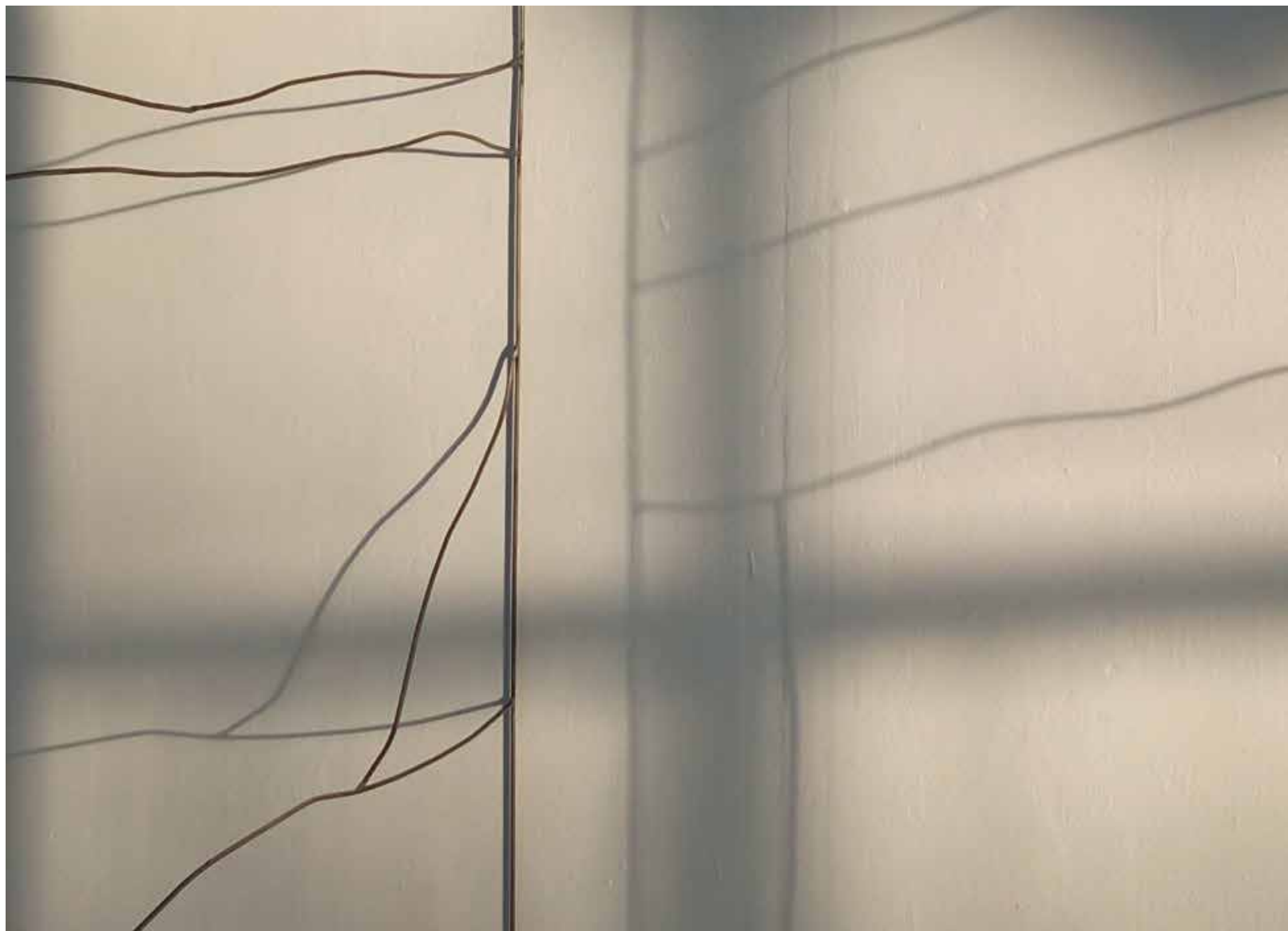
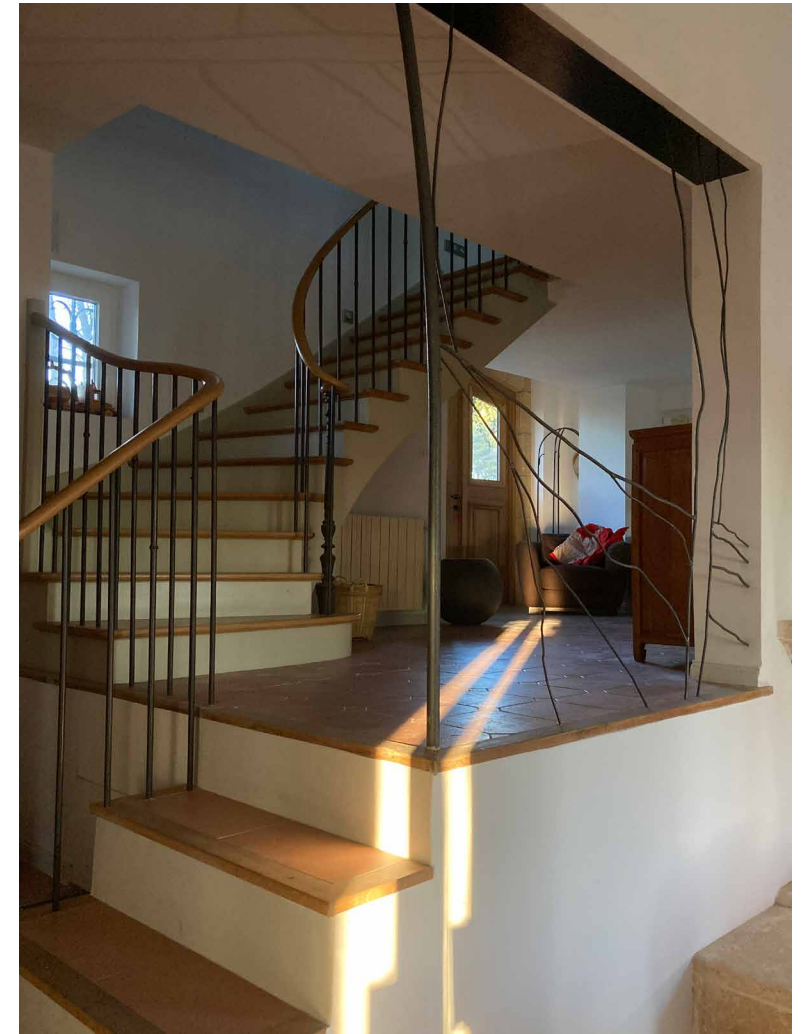


Chloé Poey-Lafrance

bespoke designs





View of the two pine trees from above, east side, 2023
steel arc welded, 184 x 165 cm

in situ art piece creation and installation, acting as a guardrail
on commission, for the interior of a private individual



lamps made from recycled materials, 2023
steel, stainless steel and iron arc welded

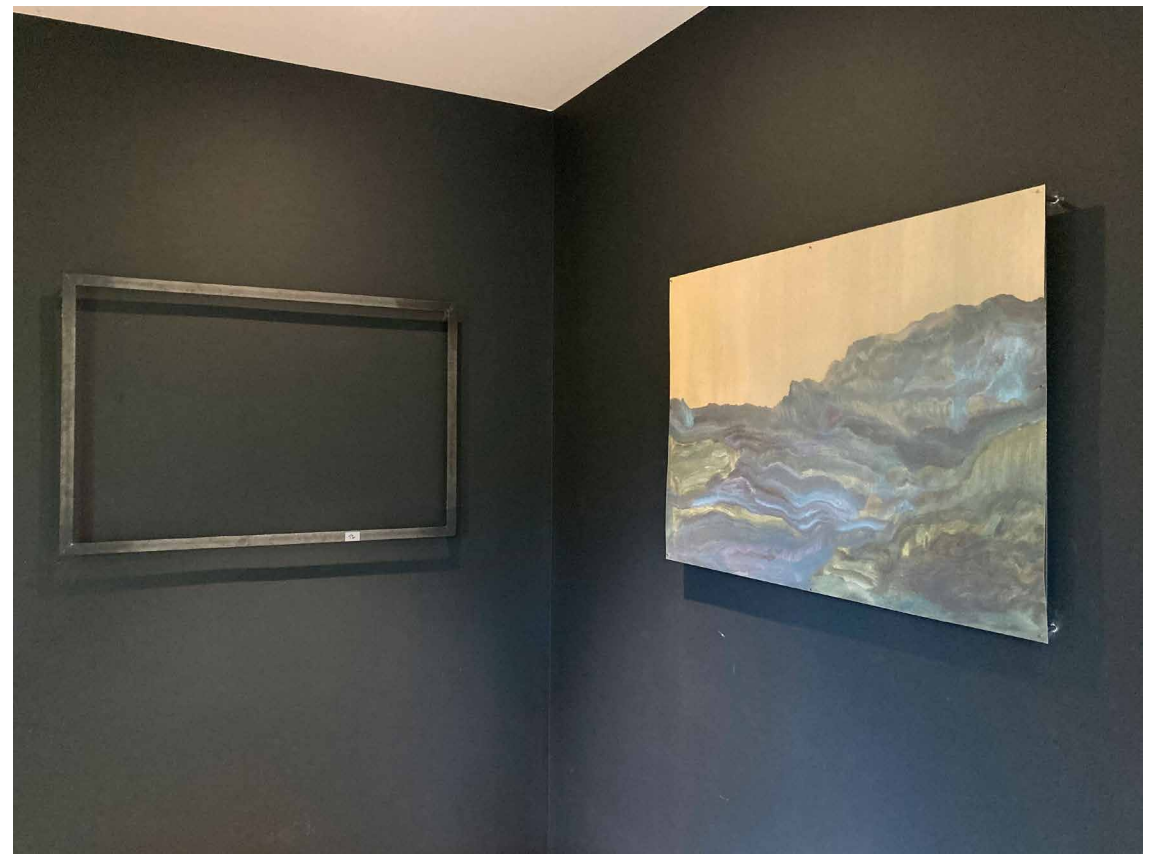






commission for a private individual, 2023
design and installation of metal supports for a serie of paintings

flat laminate and MIG-welded steel rods in the form of a frame
to be inserted into the wall, leaving an opening to give volume to the paintings





Plane trees alley, 2023
steel, stainless steel and iron MIG welded, 205 x 145 cm

in situ art piece creation for the open-air collective
exhibition *WATERGAME*, proposed by voyonsvoir
Pavillon Vendôme garden, Aix-en-Provence, France